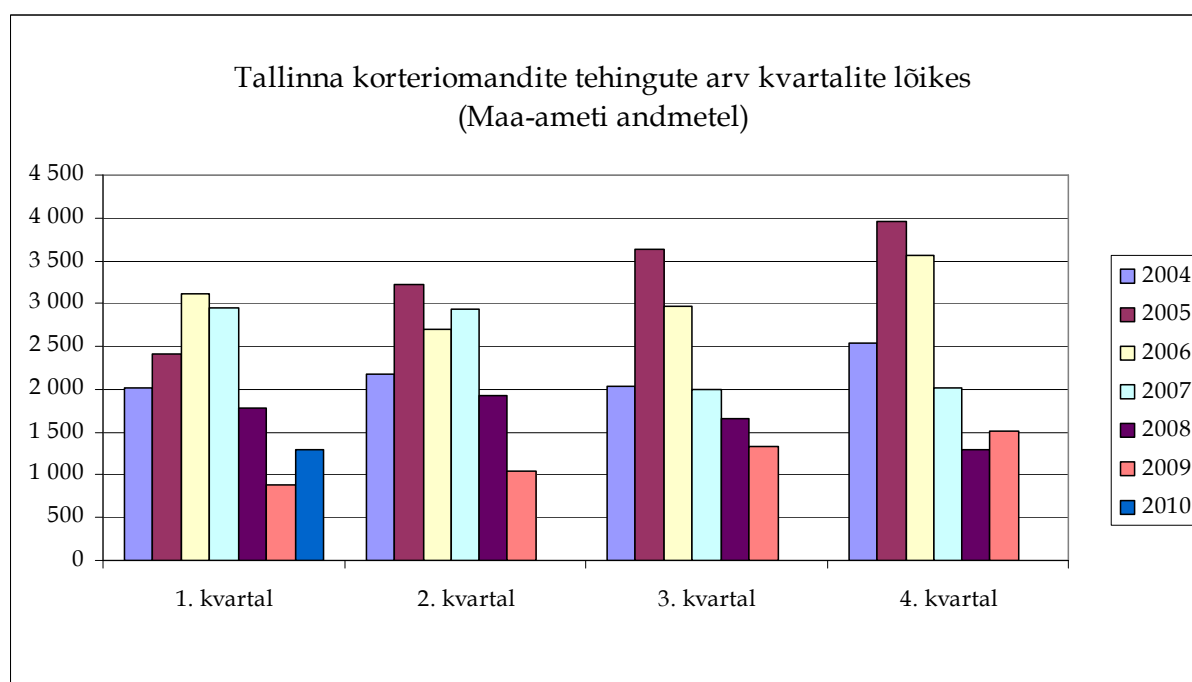
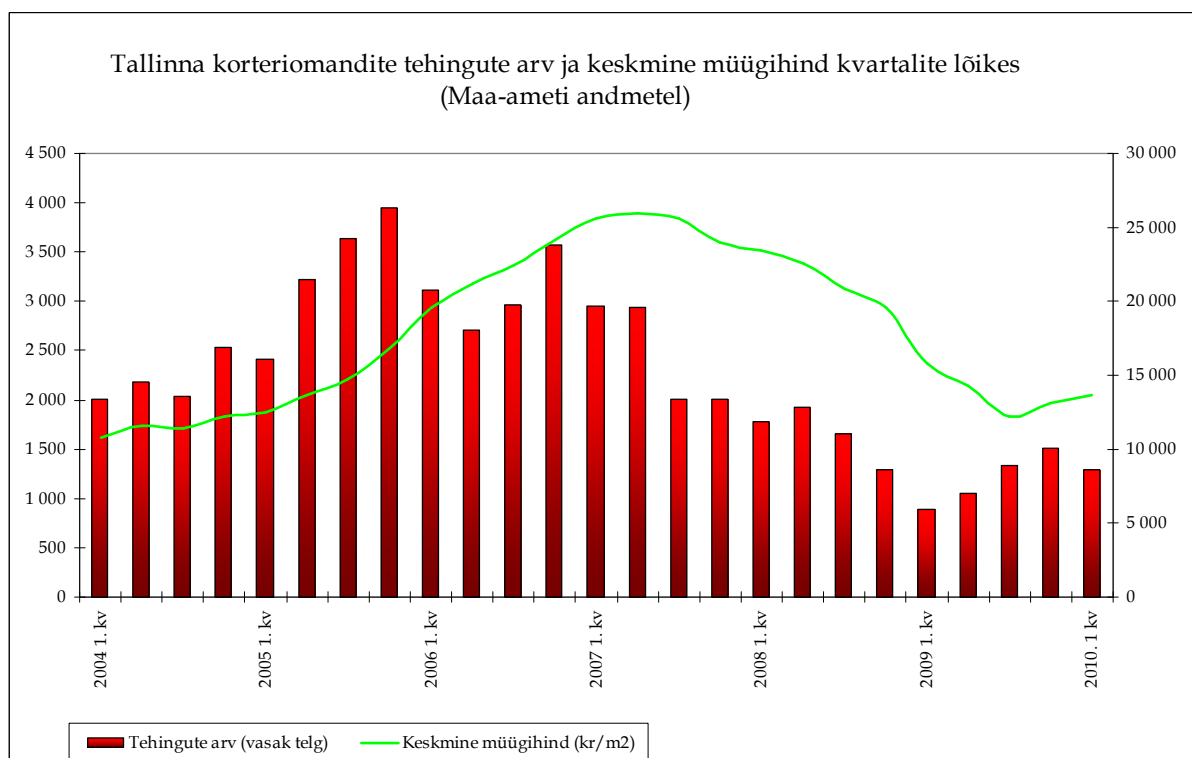
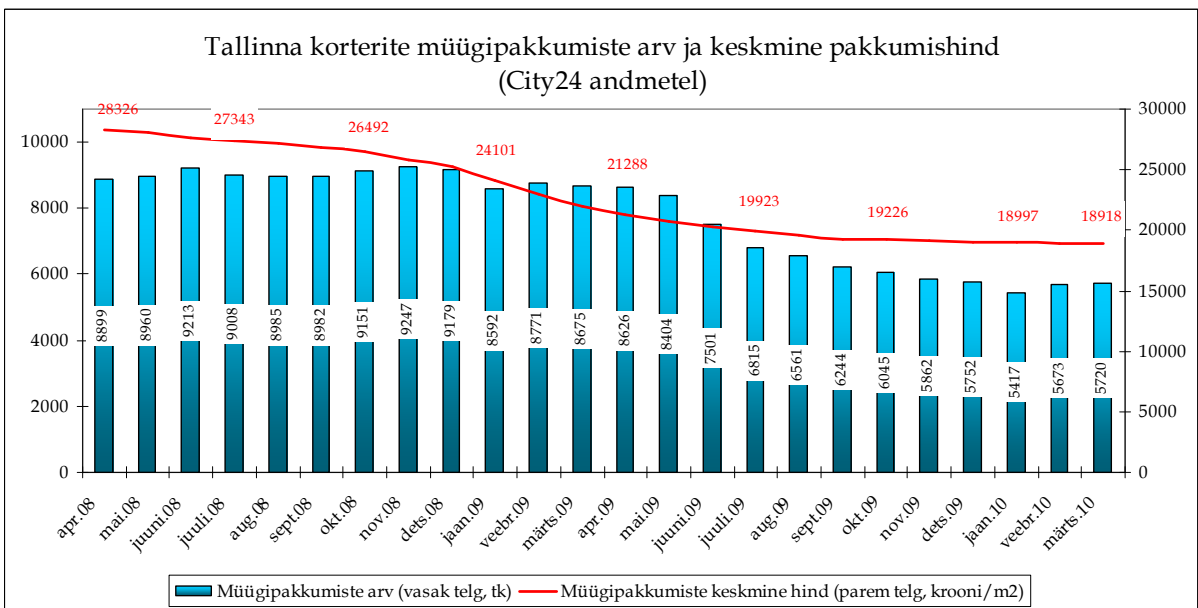
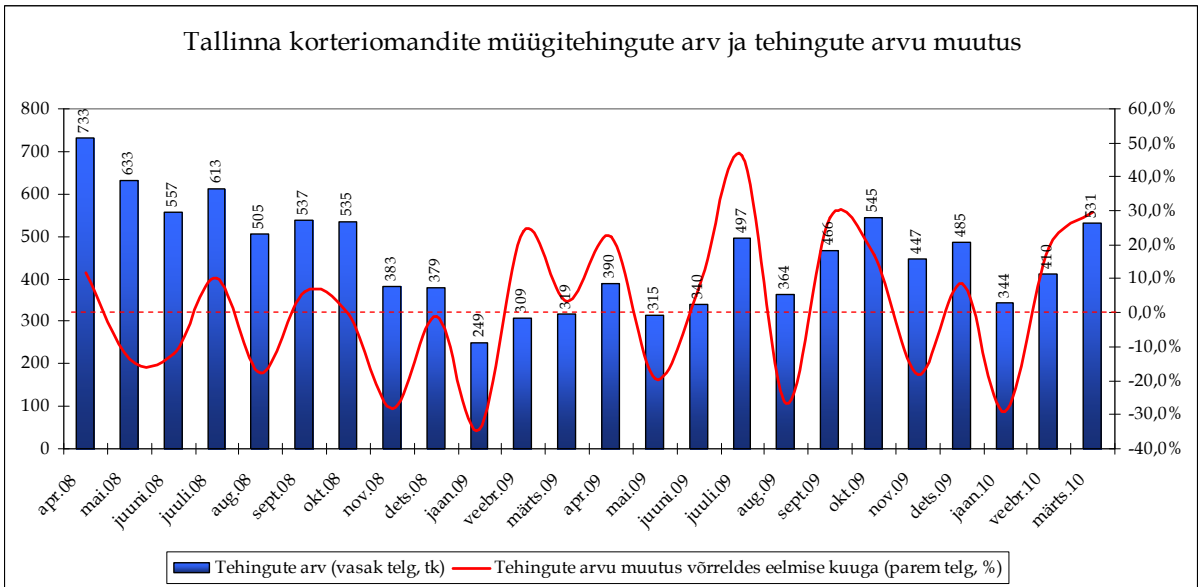
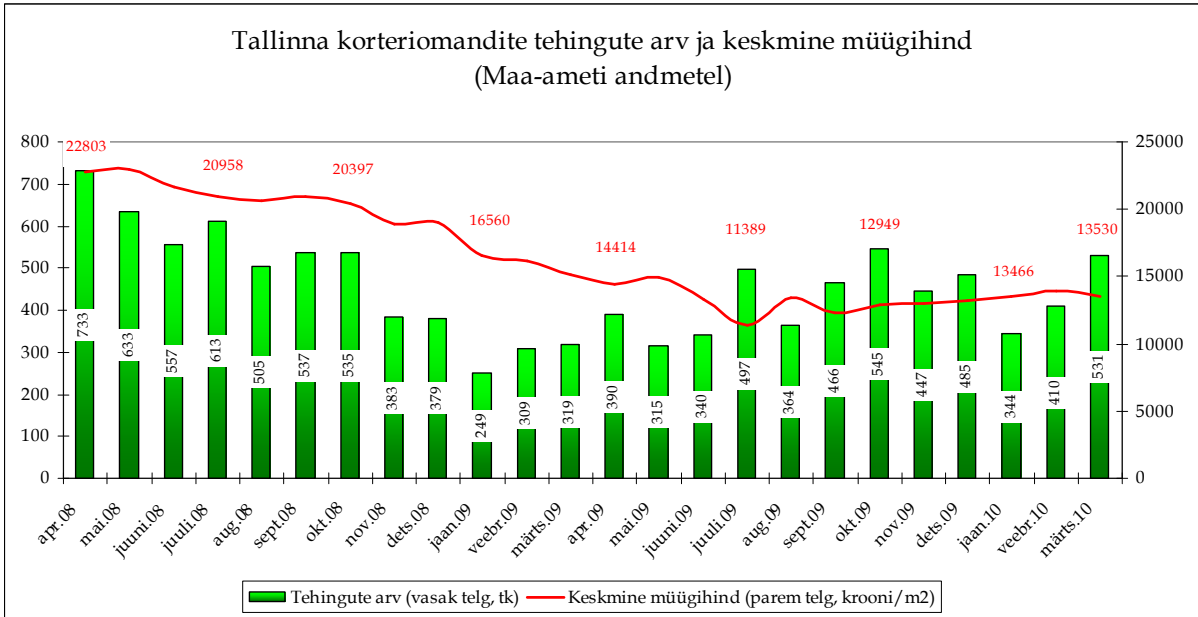
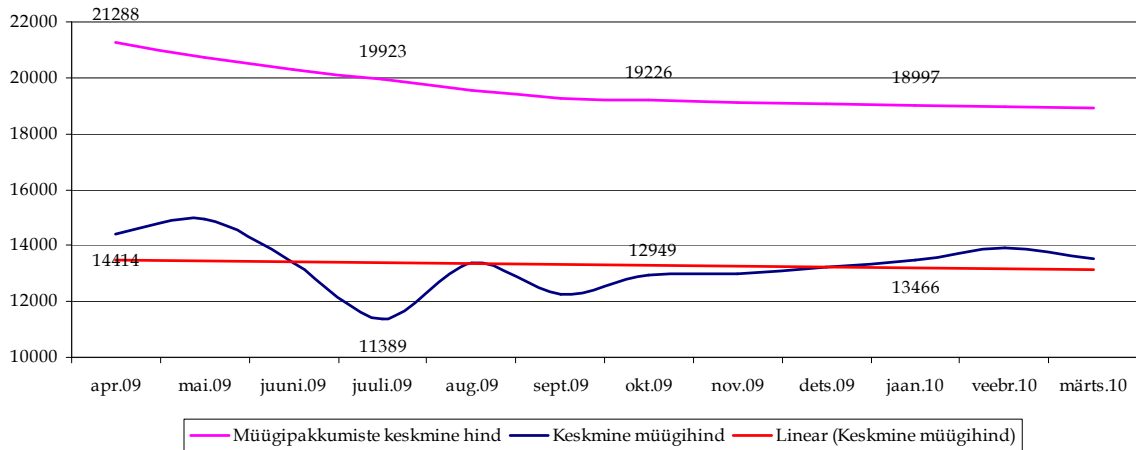


Tallinna kinnisvaraturgu iseloomustavad graafikud seisuga 12. aprill 2010

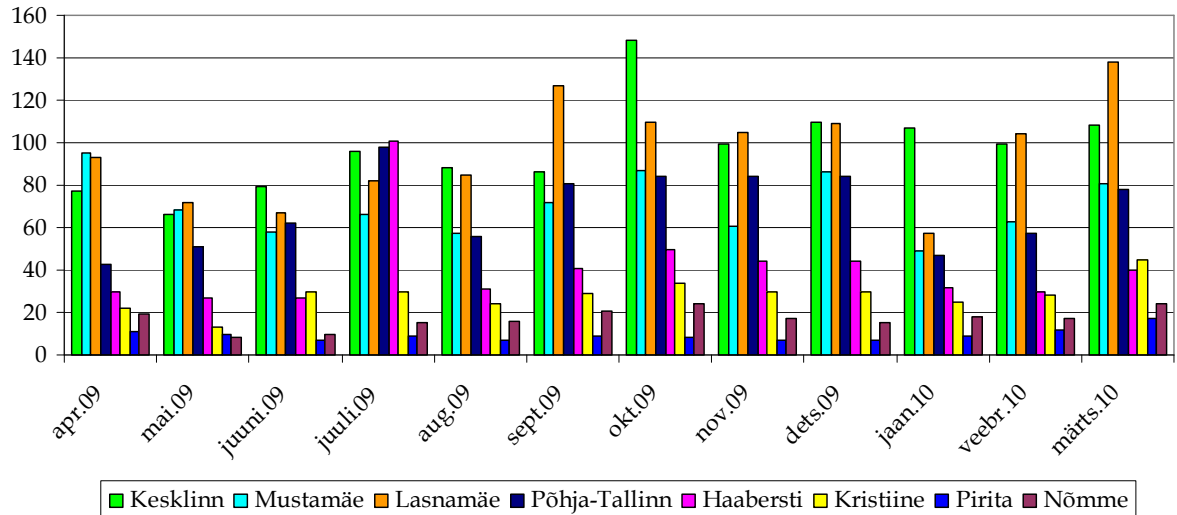




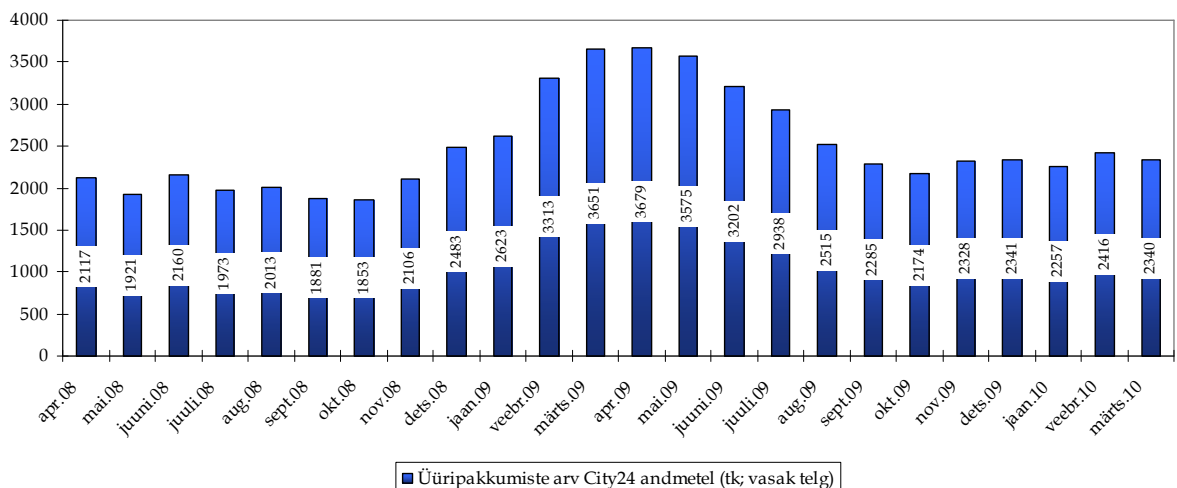
Tallinna korteriomandite keskmised hinnad (viimased 12 kuud)

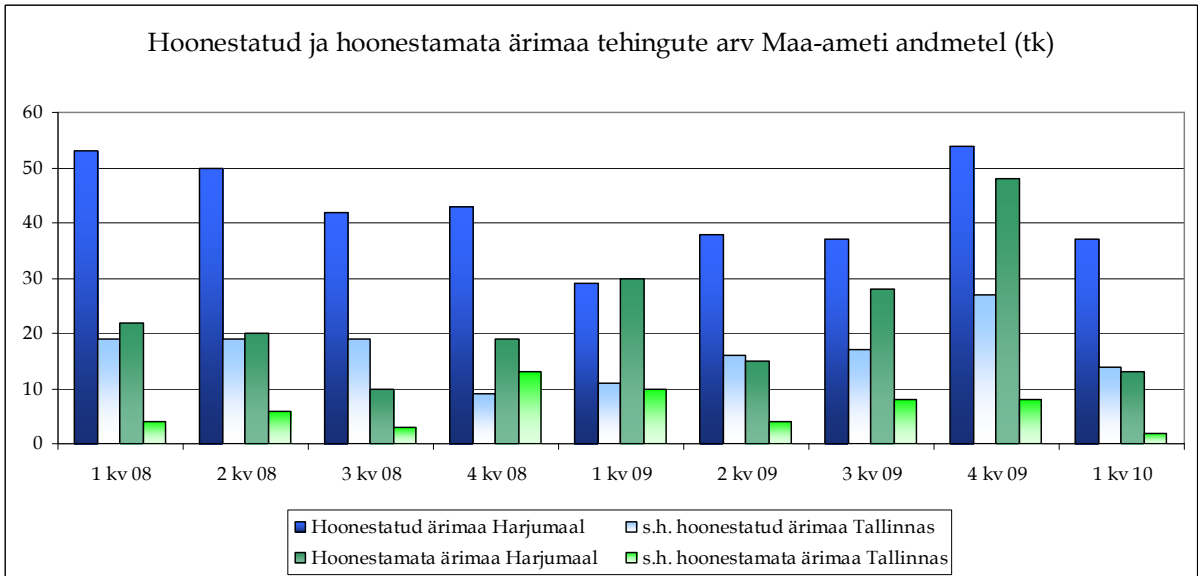
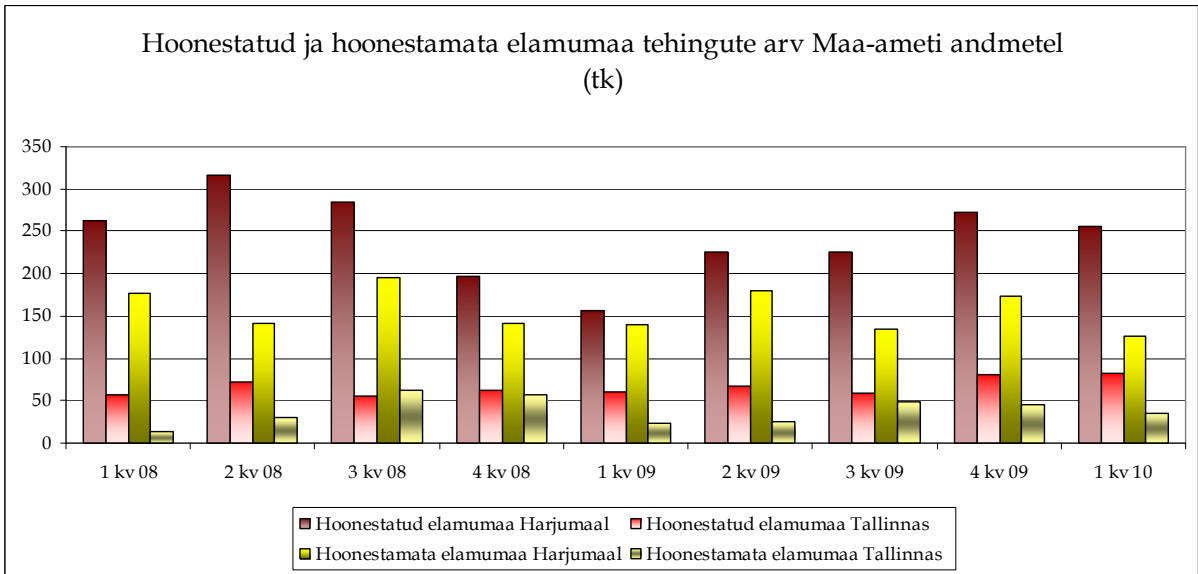
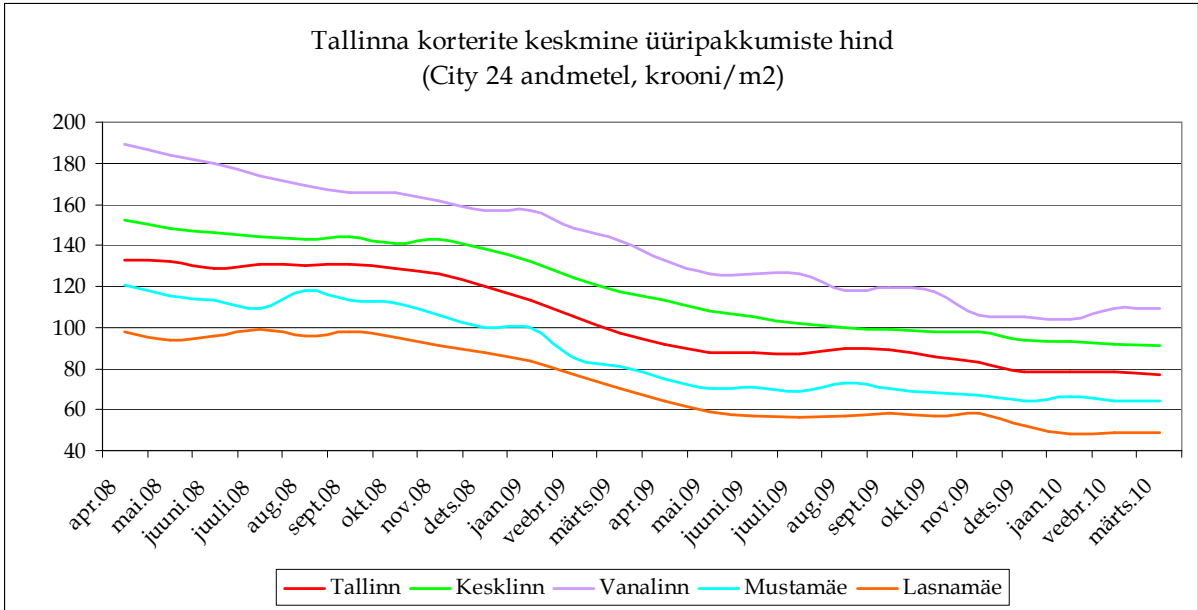


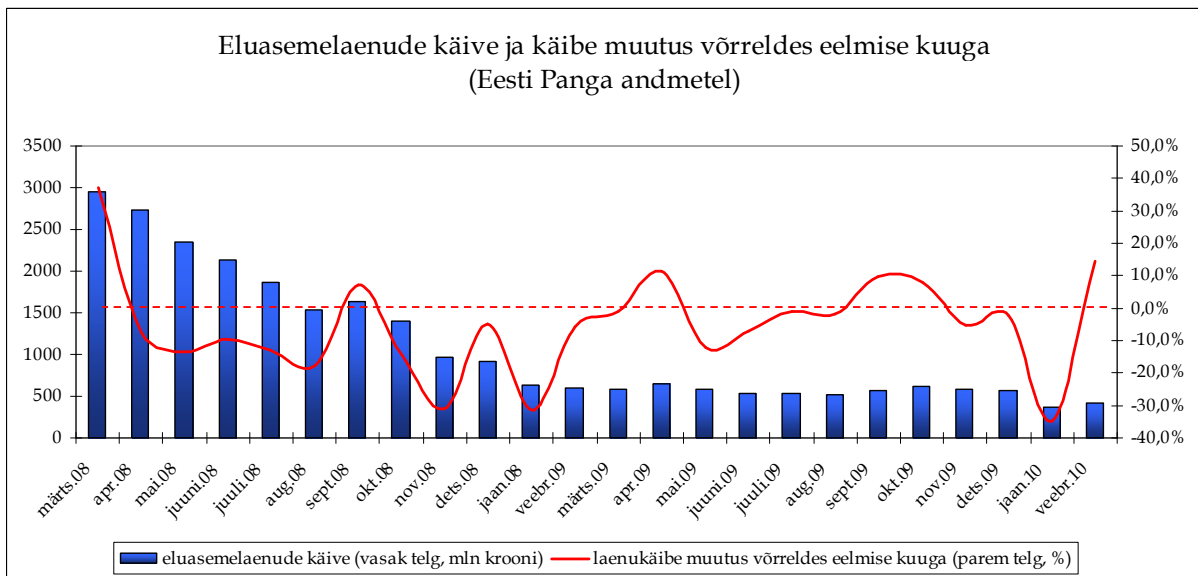
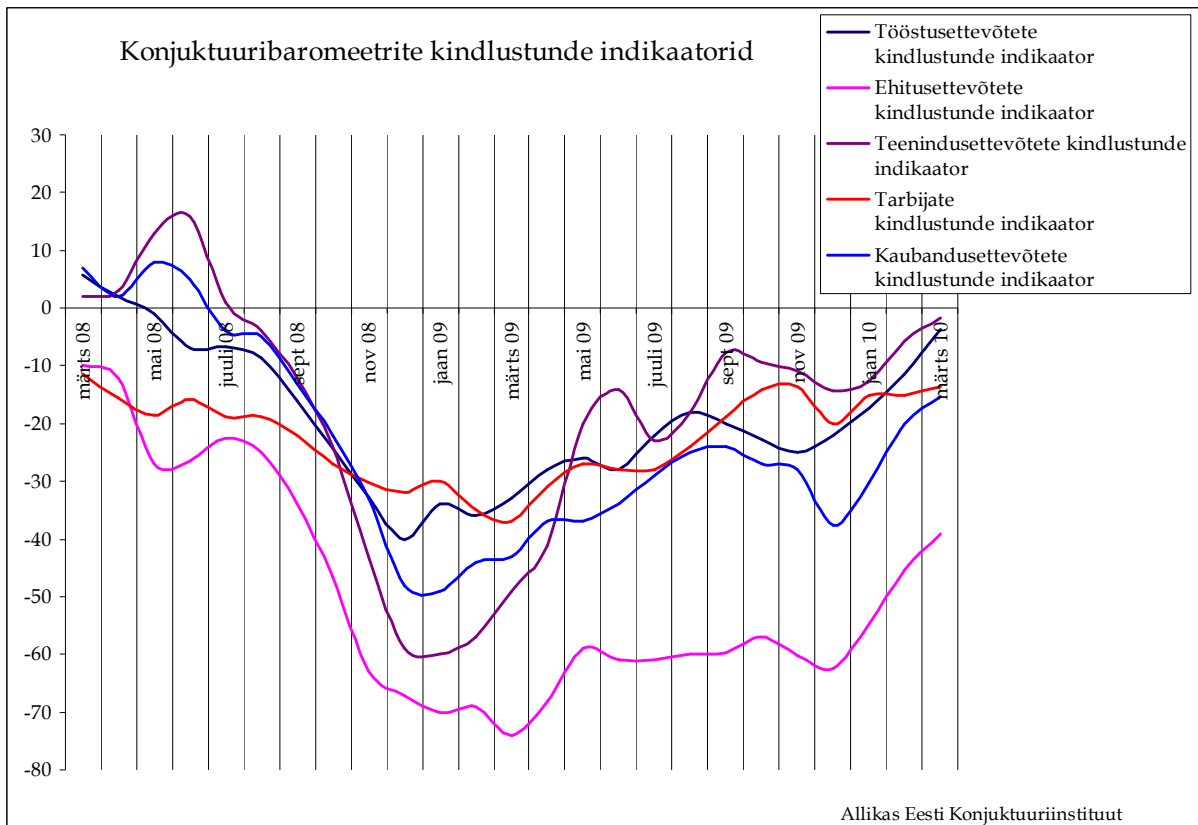
Tallinna korteriomandite tehingute arv linnaosade lõikes (Maa-ameti andmetel, tk)



Tallinna korterite üüripakkumiste arv







Kasutatud andmete allikateks on: Eesti Pank, Eesti Konjukturiinstituut, Maa-amet, portaal City24.ee.

Dokument on koostanud Ühinenud Kinnisvarakonsultandid OÜ poolt tuginedes allikatele, millised on meie arvates usaldusväärsed. Ühinenud Kinnisvarakonsultandid OÜ ei vastuta toodud informatsiooni õigsuse eest. Ühinenud Kinnisvarakonsultandid OÜ ei vastuta käesoleva dokumendi kasutamisest tulenevate otsuste või kaudsete kahjude eest.